



WEST KIRBY  
SCHOOL &  
COLLEGE

*Changing Children's Lives*

---

# Candidate Information Pack

---

*For The Role Of:*

**Domestic Assistant**

**(Zero hour  
contract)**







 **WEST KIRBY SCHOOL**  
A DAY AND RESIDENTIAL SPECIALIST SCHOOL AND COLLEGE

# Contents

---

ABOUT OUR SCHOOL	04
WELCOME FROM OUR CEO & PRINCIPAL	05
THE ROLE	
Role Overview & Application Process	06
Person Specification	07
Job Description	08



# ABOUT OUR SCHOOL

## Our dedicated staff are committed to 'Changing children's lives, building better futures'.

We achieve this through a consistent approach towards understanding the needs and motivations of children and young people ('CYP'); and through recognising and celebrating their efforts and achievements.

As a non-maintained special school, West Kirby School and College caters for CYP, aged 5-19 years, with a range of complex special educational needs and disabilities ('SEND'). We support pupils with social and communication difficulties; Autistic Spectrum Condition; ADHD; PDA; related learning and emotional, sensory and motor needs, across a range of cognitive abilities.

Our aim is for young people to leave West Kirby School and College with **academic accreditations**, together with developed **social, emotional** and **communication skills**. We achieve this through a structured, supportive learning environment with an individualised curriculum, based on relevant and meaningful learning, where CYP make aspirational progress from individual starting points.

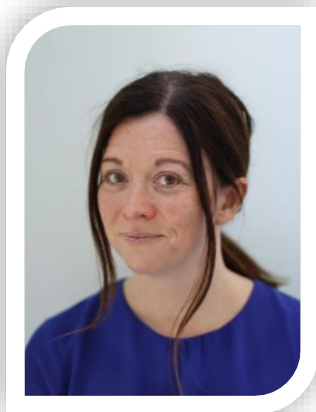
In tandem with this, we promote the development of **life skills, personal wellbeing** and **good mental health** through structured activities and adventures, both in and outside school. These enrich learning opportunities and give pupils an appreciation of the wider world, of community and charitable partnerships.



Our broad approach enables pupils to experience and develop **career pathways** which, we hope, will lead them towards a successful adult life. Due to its location to the North West of the Wirral peninsula, West Kirby is able to offer a wide range of opportunities for community relationships, sports, water recreation and natural history. Liverpool and Chester with their wealth of art, culture and history are within easy reach.

The school is close to the centre of West Kirby village and is 200m from the nearest beach and local marine lake.

# WELCOME FROM OUR CEO & PRINCIPAL



**Dear Candidate,**

I am delighted that you are interested in joining West Kirby School & College as a **Domestic Assistant**.

I hope that this information pack gives you a flavour of this role and our wonderful school community.

Welcome to West Kirby School and College, a non-maintained special school initially founded over 100 years ago as a hospice for children. Since that time we have grown and developed into the successful school we are today. Times have changed, but we remain enthused by the opportunity to support, enable and develop children and young people towards realising their aspirations.

Ultimately, we want to support each of our pupils towards '**living their best life**'.

As a team, we are driven to inspire and motivate pupils, ensuring they are equipped with knowledge, skills and experiences which will help them achieve their goals and ultimately reach their full potential. We understand that each child and young person is different and has individual needs. Therefore we tailor teaching, learning and therapeutic interventions - making activities accessible so pupils can flourish and thrive.

Our **nurturing environment, culture of respect**, and **promotion of acceptance and diversity** is a backdrop which allows pupils to grow into young adults, who have an understanding of themselves and those around them.

Our **safe and accepting space** also allows pupils to express themselves so they feel part of our **community**. Coupled with this, we are dedicated to working within our community, using our expertise to offer support to local schools, colleges and parent groups in areas of Special Educational needs and Disabilities. We are currently developing a programme of free training and support which will be offered across the Local Authority.

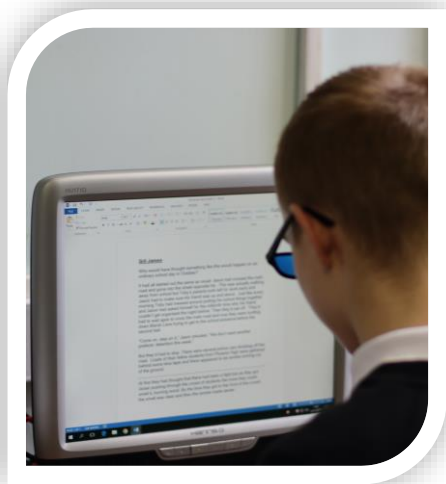
As Principal of WKS, I would be delighted to welcome you to the school to see for yourself our inspirational environment and for you to meet our equally inspiring pupils.

With Warm Regards,

*Sian*

**Miss Sian Thomas**  
CEO & Principal

# ROLE OVERVIEW & APPLICATION PROCESS



**West Kirby School & College is seeking to appoint a Domestic Assistant.**

**Zero Hour Contract/ Hourly rate: £8.96**

## Role Overview:

The successful candidate will be responsible for ensuring a safe clean environment for pupils, staff and visitors. As a Domestic assistant, you will be assisting in the general cleaning of the building, serving and clearing dining and kitchen areas and maintaining a high standard of hygiene throughout.

### What we're looking for:

- Significant site cleaning experience
- Knowledge of Health and Safety issues in a working environment
- Knowledge of COSHH within a working environment
- Maintaining stores/equipment
- Clean full driving licence

## Application Process:

Application forms and further information can be downloaded from the school website: [www.wkrs.co.uk](http://www.wkrs.co.uk) or contact [recruitment@wkrs.co.uk](mailto:recruitment@wkrs.co.uk). **The School does not accept CV's.**

The School is committed to safeguarding and promoting the welfare of children and young people and expects all staff and volunteers to share this commitment.

The successful applicant will be subject to rigorous recruitment checks and an enhanced DBS check.

# PERSON SPECIFICATION

## Person Specification – Domestic Assistant

West Kirby Residential School is committed to safeguarding and promoting the welfare of children and young people and expects all staff and volunteers to share this commitment.

	<b>Essential</b>  These are qualities without which the applicant could not be appointed	<b>Desirable</b>  These are extra qualities which can be used to choose between applicants who meet all of the essential criteria	<b>Method of Assessment</b>
<b>Qualifications</b>	<ul style="list-style-type: none"> <li>Clean full driving licence</li> </ul>	<ul style="list-style-type: none"> <li>Qualifications relating to Health and Safety and/or COSHH</li> </ul>	<ul style="list-style-type: none"> <li>Production of the applicant's certificates</li> </ul>
<b>Experience</b>	<ul style="list-style-type: none"> <li>Significant site cleaning experience</li> </ul>	<ul style="list-style-type: none"> <li>Experience of working in a school</li> <li>Ideally will have considerable experience and expertise as a cleaning contractor</li> </ul>	<ul style="list-style-type: none"> <li>Contents of the Application Form.</li> <li>Interview</li> <li>Professional references</li> </ul>
<b>Skills</b>	<ul style="list-style-type: none"> <li>Physically fit and practically minded</li> <li>Innovative and adaptable to work situations and emergencies</li> </ul>	<ul style="list-style-type: none"> <li>Able to collaborate within a team</li> </ul>	<ul style="list-style-type: none"> <li>Contents of the Application Form</li> <li>Interview</li> <li>Professional references</li> </ul>
<b>Knowledge</b>	<ul style="list-style-type: none"> <li>Knowledge of Health and Safety issues in a working environment</li> <li>Knowledge of COSHH within a working environment</li> <li>Maintaining stores/equipment</li> </ul>	<ul style="list-style-type: none"> <li>Knowledge of working with pupils with complex special educational needs</li> </ul>	<ul style="list-style-type: none"> <li>Contents of the Application Form</li> <li>Interview</li> <li>Professional references</li> </ul>

# PERSON SPECIFICATION (Cont.)

## Person Specification – Domestic Assistant

West Kirby Residential School is committed to safeguarding and promoting the welfare of children and young people and expects all staff and volunteers to share this commitment.

	<b>Essential</b>  These are qualities without which the applicant could not be appointed	<b>Desirable</b>  These are extra qualities which can be used to choose between applicants who meet all of the essential criteria	<b>Method of Assessment</b>
<b>Personal Competencies &amp; qualities</b>	<ul style="list-style-type: none"> <li>• Motivation to work with children and young people.</li> <li>• Ability to form and maintain appropriate relationships and personal boundaries with children and young people.</li> <li>• Emotional resilience in working with challenging behaviours.</li> <li>• Positive attitude to use of authority and maintaining discipline.</li> <li>• Sense of Humour</li> <li>• Patience</li> </ul>	<ul style="list-style-type: none"> <li>• Adaptable and flexible</li> <li>• Overcome barriers</li> <li>• Detail orientated</li> <li>• Planning skills</li> <li>• Cost conscious</li> </ul>	Contents of the Application Form  Interview  Professional Reference



# JOB DESCRIPTION

## Role Description– Domestic Assistant

West Kirby Residential School is committed to safeguarding and promoting the welfare of children and young people and expects all staff and volunteers to share this commitment.

### Summary of The Role:

Assisting in the general cleaning of the building, serving and clearing dining and kitchen areas, maintaining a high standard of hygiene throughout.

### Responsibility to:

Premises Manager

### Main Duties:

- Ensuring all areas of the school buildings are maintained to a high standard of hygiene and cleanliness
- Preparation of dining areas, serving meals and clearing away
- Ensuring all cleaning equipment and machinery is kept in good repair and report any faults
- Ensuring Health & Safety standards are maintained and safe working practices adhered to within the section, being mindful of hazardous substances and COSH regulations.
- Safeguarding the welfare of children and young persons for who you are responsible and with whom you come into contact.
- The following of all school's policies and procedures.
- Any other duties which may be required from time to time suited to the grading of the post.

#### Health and Safety:

- To support the Premises Manager with responsibilities under the Health & Safety at Work Act for the safety of all users and visitors to the academy.
- To ensure Personal Protective Equipment (PPE) is used wherever there are risks to Health and Safety that cannot be adequately controlled in other ways.
- Ensure that all equipment and machinery is in a safe working condition and properly stored when not in use, reporting any concerns about the condition of equipment to the Premises Manager as quickly as possible.
- To keep school grounds and premises litter free, ensuring any hazardous materials or items are disposed of safely.





**West Kirby School & College**  
Meols Drive  
West Kirby  
Wirral  
CH48 5DH

0151 632 3201  
[schooloffice@wkrs.co.uk](mailto:schooloffice@wkrs.co.uk)

Registered charity No.207790.

